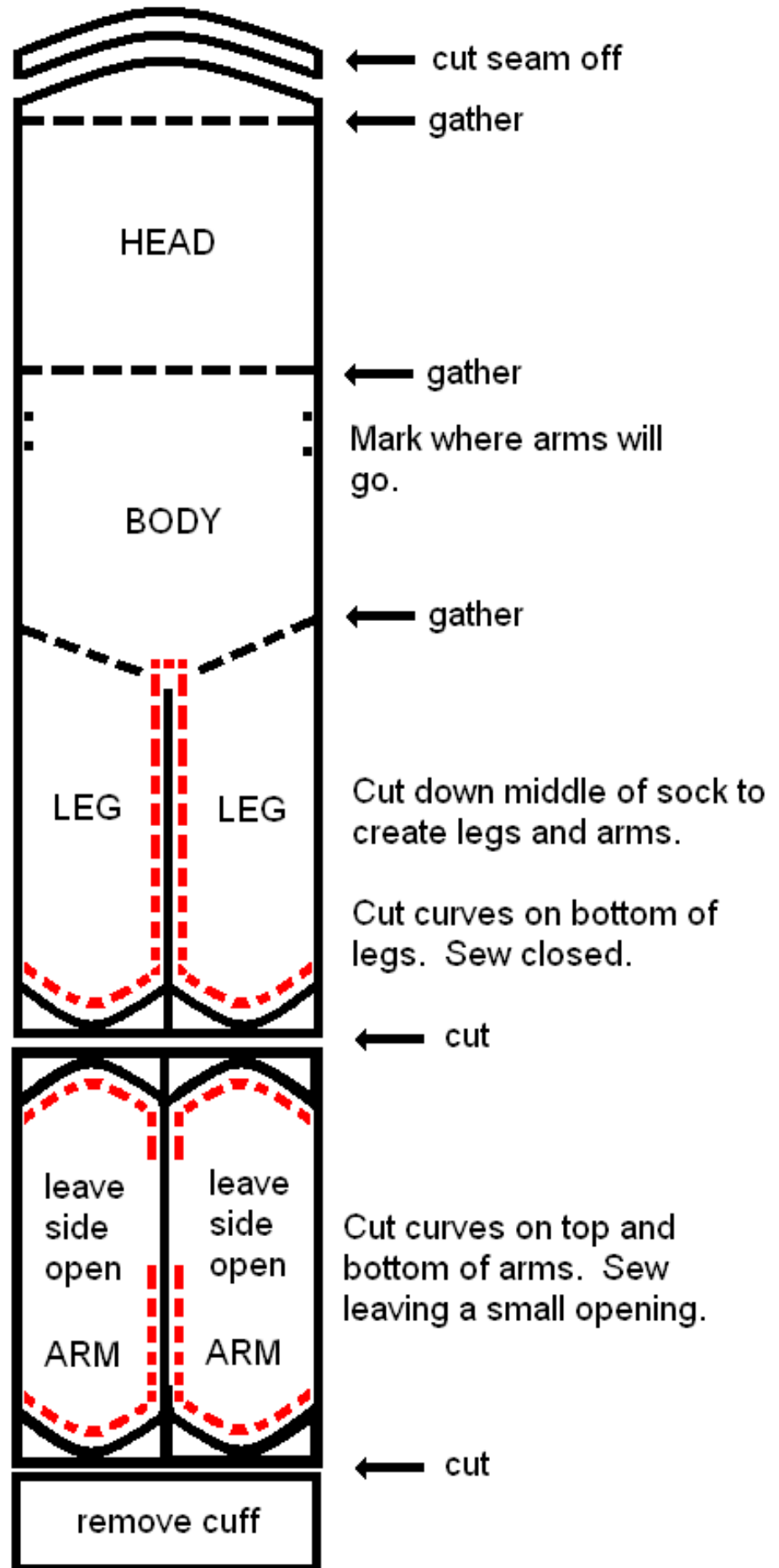
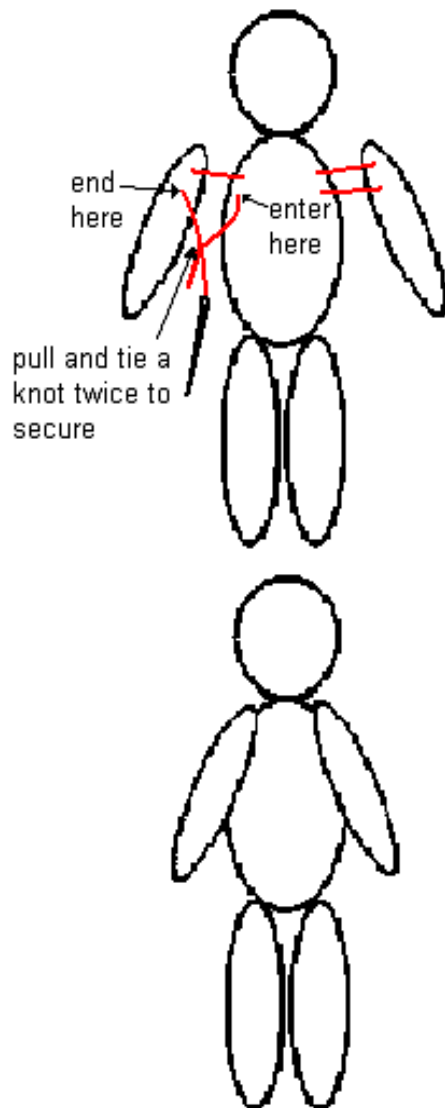


Instructions:

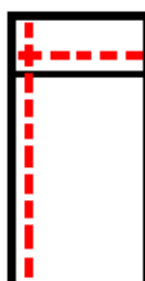
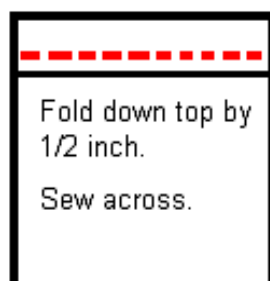
1. Cut out where indicated to create body of doll.
2. Turn all pieces so wrong sides are facing before sewing. Turn all pieces right side out before stuffing.
3. Stuff before gathering each section. Gather closed top of head tucking in fabric and sew closed.
4. After stuffing and sewing arms. Attach arms using strong string beginning on left side.



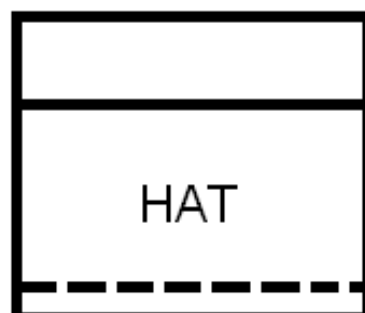
Instructions:

1. Cut out where indicated to create sleeper and hat.
2. Turn all pieces so wrong sides are facing before sewing.
3. Sew where indicated.
4. Sleeves should be right side out and placed in opening before hand sewing.

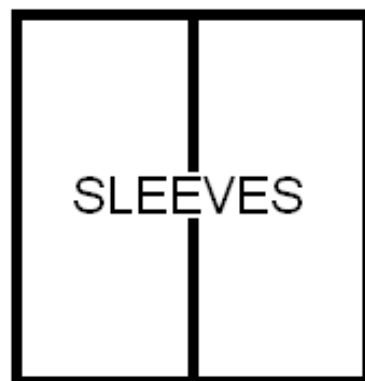
How To Sew Sleeves



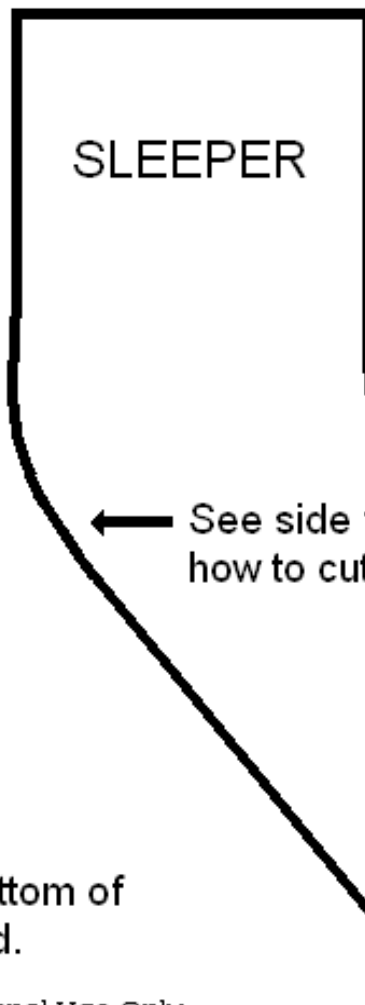
Fold in half lengthwise then sew.



← gather
← cut

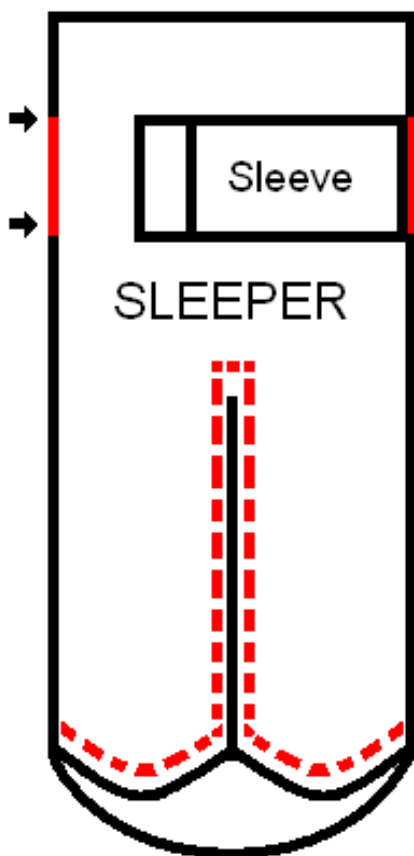


Cut down middle to create sleeves of sleeper.



← Flatten to cut out legs of sleeper.
Heal of sock will be the back of the sleeper.

← See side for how to cut.



← Cut slits for fitting in sleeves of sleeper.

Hand sew sleeves in. Sleeper should be wrong side out.

Cut down middle to create legs.

Cut curves on bottom of legs. Sew closed.